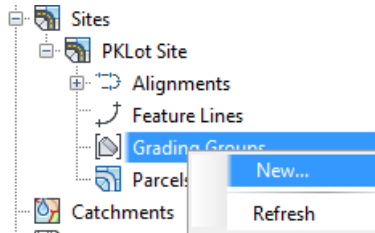


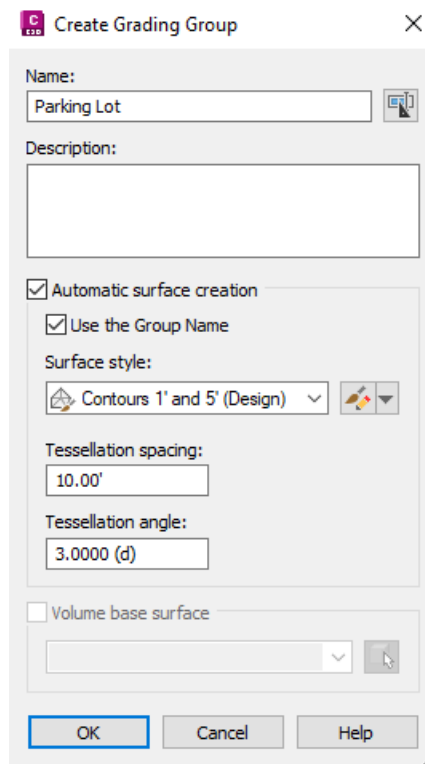
Grading – Civil 3D

The objective in grading is to build a proposed surface using points, feature lines, polylines, and gradings. Then you may calculate volumes comparing it to the existing surface.

1. Right-click “Sites” > New
2. Dig into the site and right-click “Grading Groups” > New

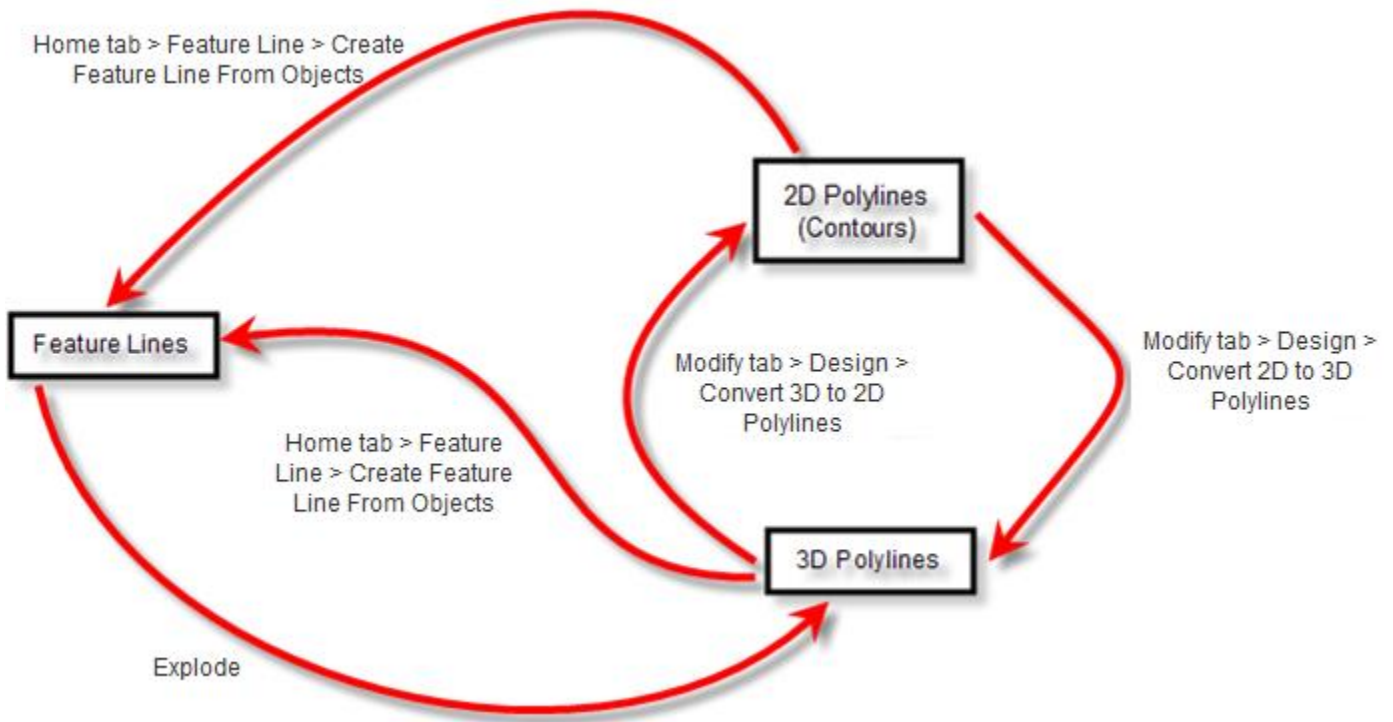


3. Checking the “Automatic Surface Creation” box is extremely useful as gradings are automatically added to the surface, but it comes with some risk. Complicated grading projects can cause slowness and possible crashes.

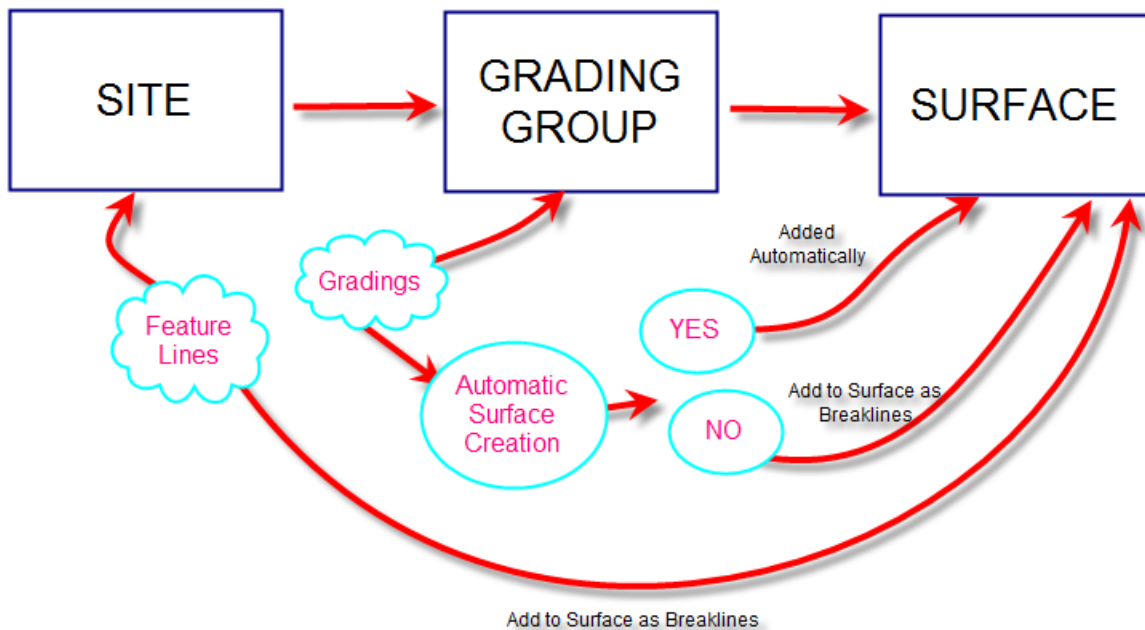


4. Now using points, features lines, 2D polylines, 3D polylines, or Gradings, add the necessary data to the surface, under the definition.

This figure below shows the path one can take to create and modify different entities. There are advantages and disadvantages to each type of entity. By far, the most versatile are feature lines. You may convert these entities following the arrows below.

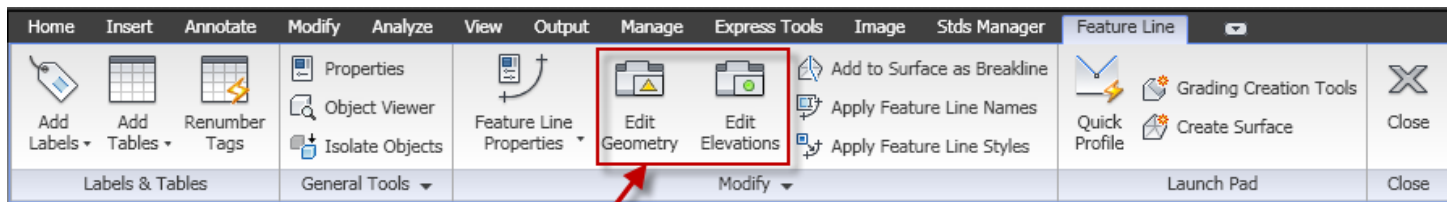
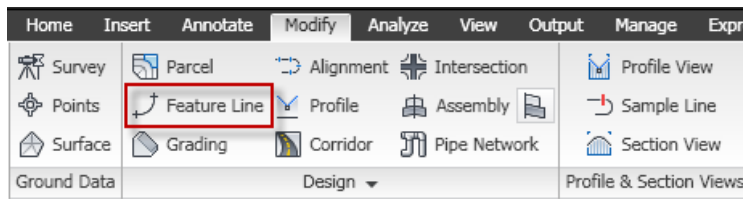
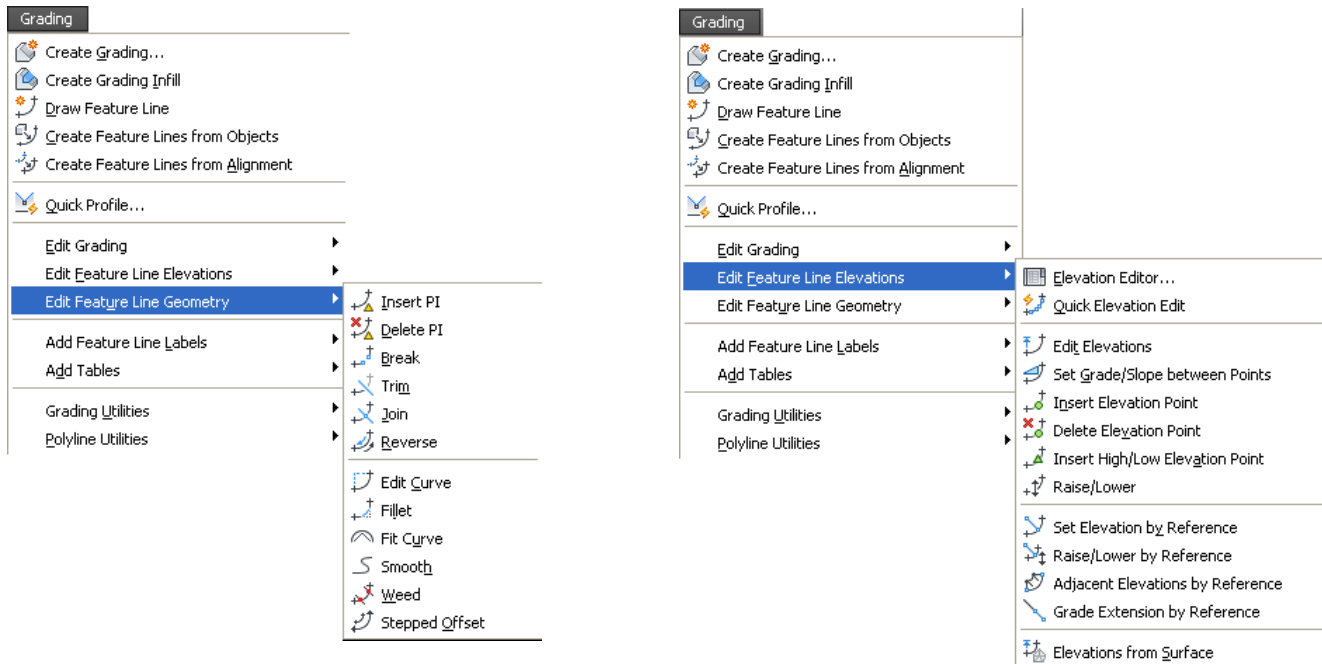


The figure below explains the general workflow when adding data to a surface when using the grading tools.



Feature Lines

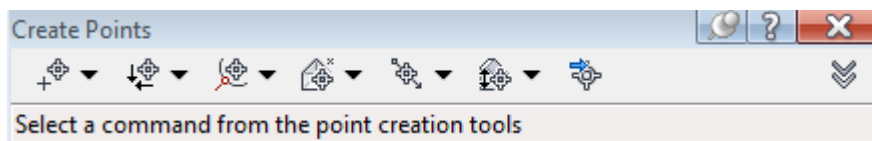
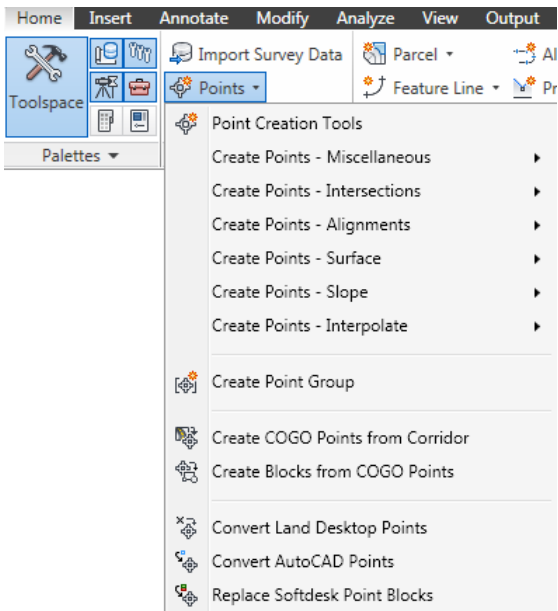
A thorough explanation of feature line commands exists in the advanced manual. Please refer to that for additional information. The feature line commands can be found in the Grading pulldown or on ribbons.



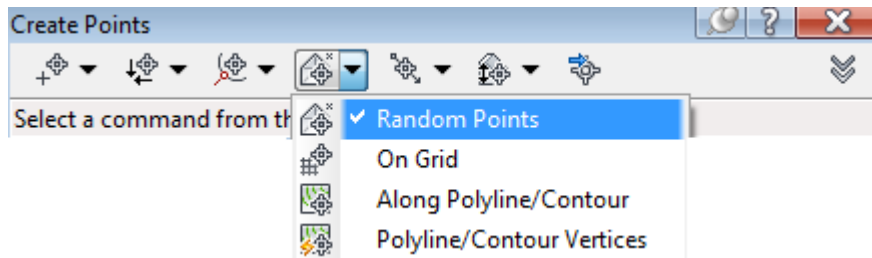
Use these to open the panels in the Feature Line ribbon tab.

Points

Select the **Point Creation Tools** under the Home tab of the ribbon.



Create Points on a Surface

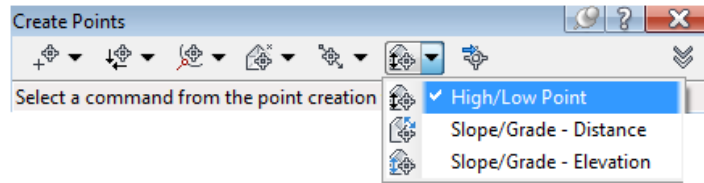


- **Random Points** - This command reads the current surface, and the user picks an x,y location in the drawing and the command will enter the elevation based on the surface.
- **On Grid** - This command will prompt for rotation angle, x, and y spacing to place points in the same fashion as the 'Random Points' command.
- **Along Polyline/Contour** - This command places points based on a surface elevation along a polyline. The command prompts for spacing.
- **Polyline/Contour Vertices** - This command places a point on each vertex of a polyline, this will not read the surface elevation.

There is also a command to change existing points to the elevation of the surface.

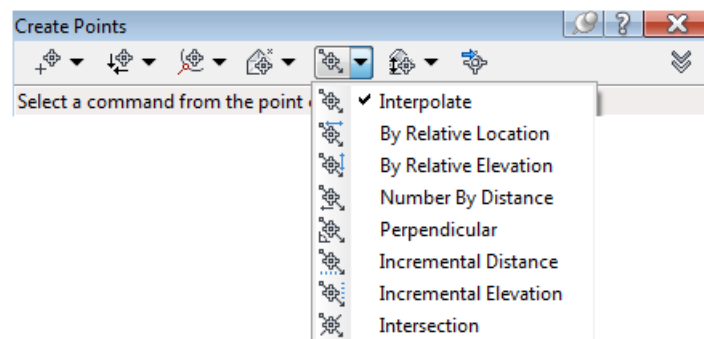
Points > Edit > Elevations from Surface

Create Points based on Slope



- **Slope/Grade – Distance** - The user picks a starting point, then a second point which denotes direction & distance, then chooses a slope or grade with several intermediate points.
- **Slope/Grade – Elevation** - The user picks a starting point then a second point which denotes just direction. The user then choosing grade/slope and elevation to end.
- **High/Low Point** - The user picks a start point then a second point. The user will be prompted from each point the desired grade or slope to find the intersection.

Create Points by Interpolation

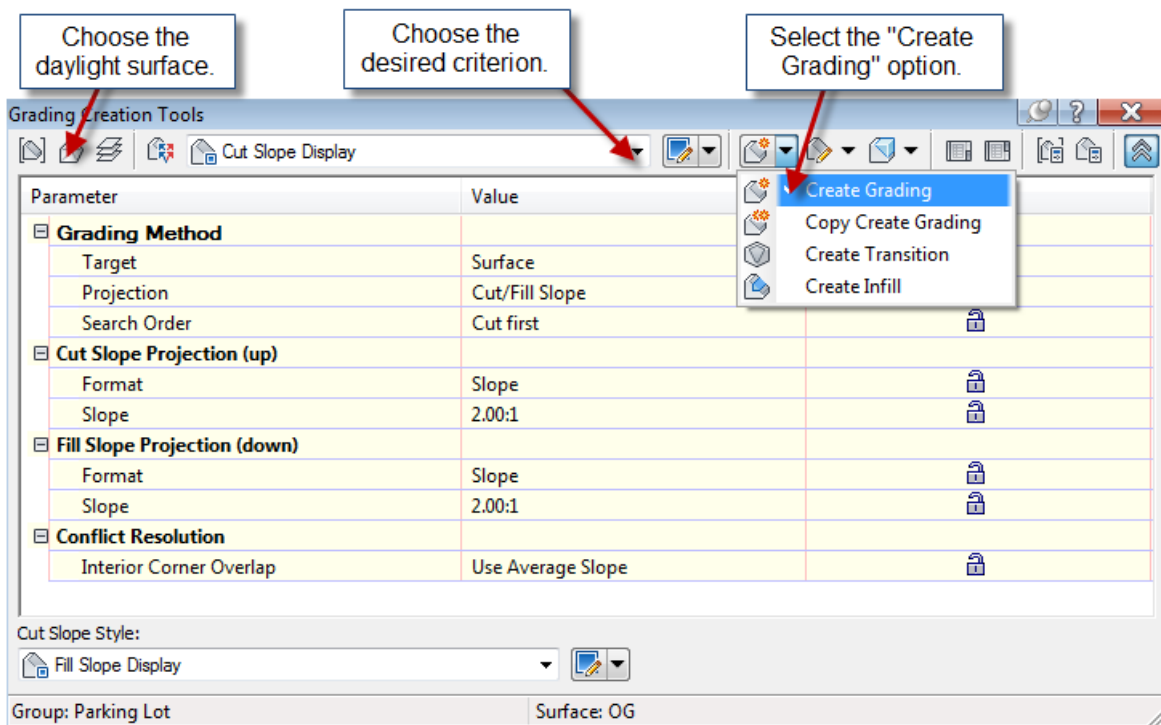
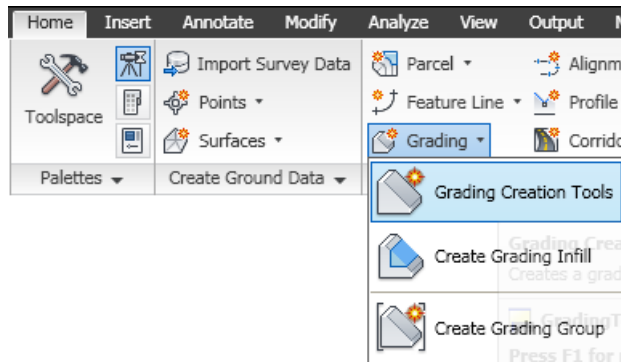


- **Interpolate** - The user picks two Point objects and enters the number of intermediate points they desire.
- **By Relative Location** - The user establishes two points then is prompted for a distance to place a point FROM the first point along the line defined by the initial two points.
- **By Relative Elevation** - The user established the two points then is prompted for an elevation between two points and the computer places the point at that elevation along the slope defined by the two points.
- **Number By Distance** - Same command as 'interpolate' except the user has more versatility in choosing the two points (i.e. you are not limited to Point objects).
- **Perpendicular** - The user picks two points to establish a line, then the user picks any point on the screen and the computer calculates the perpendicular point where it crosses the initial two points defined line then places a point at the correct elevation based on the slope of the initial points.
- **Incremental Distance** - The user established two points with elevation and then is prompted for the increment to set points.
- **Incremental Elevation** - The user establishes two points with elevation and then is prompted for the elevation increment to place points along the sloped line.
- **Intersection** - The user two points to define the first line then two points to define the second line. The user is prompted for the desired offset to each line and will place a point at that location.

Daylighting

In Civil 3D, there is only one way to daylight to a surface; using Gradings.

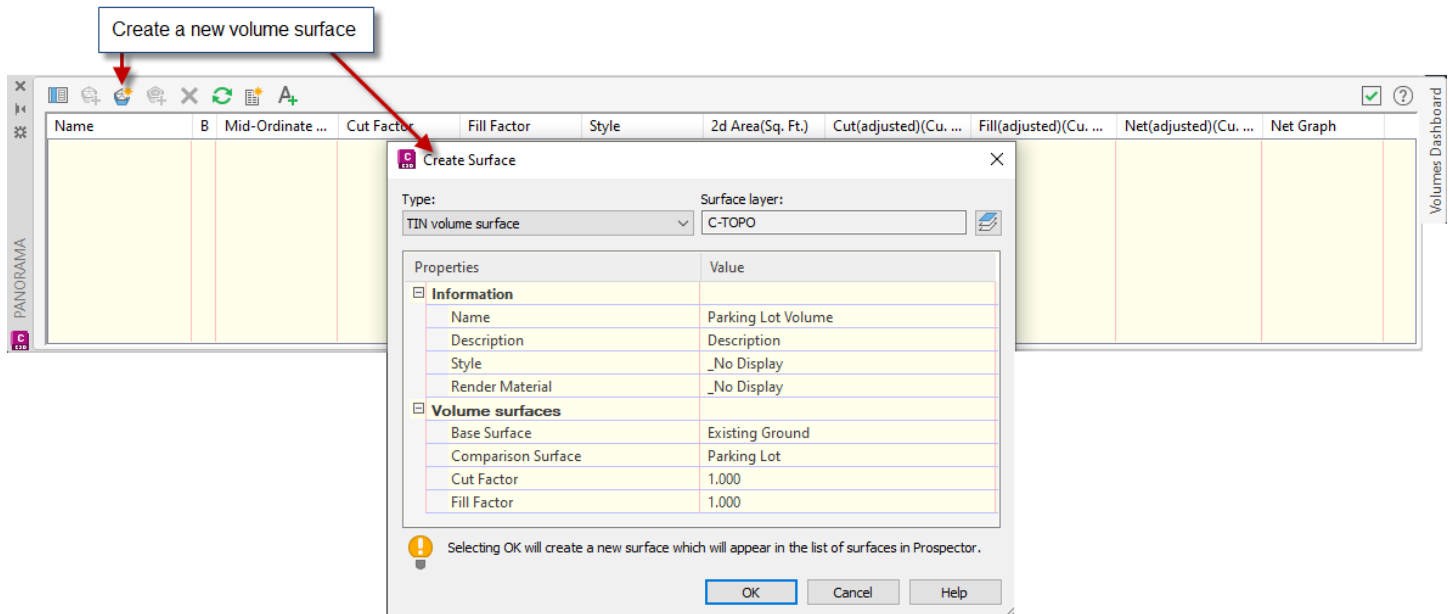
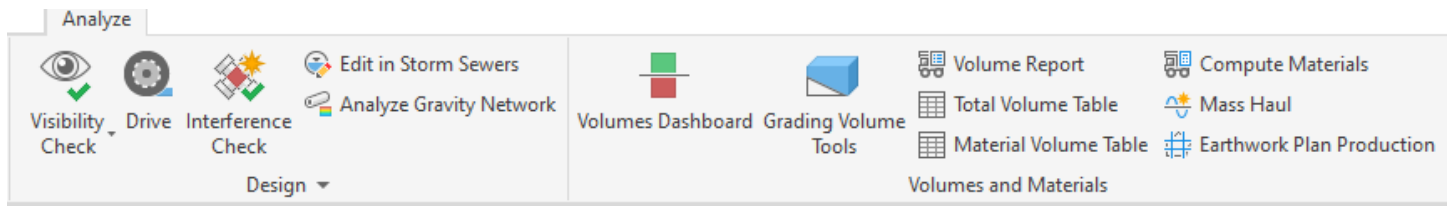
1. Select Grading Creation Tools from the Home tab of the ribbon



- a. Select the object to daylight from. This must be a feature line in the same site as the grading group.
- b. Select the side to search for the daylight surface.
- c. Apply to entire length? [Yes/No] <Yes>: This question applies if you wish to add transition slopes along a feature. For example, part of the way I need to slope at 2:1, for another part it needs to be 4:1, and then I need to transition the slope between the regions.
- d. Hitting <enter> out of the command adds the grading object to the surface supplied when you created the surface through creating the grading group (unless automatic surface generation for the grading group is not checked).

Volumes

“Analyze” tab > Volumes Dashboard



Other Options from the Volumes Dashboard

- Add a closed object in AutoCAD to use the bounded volumes option. This will calculate the volumes for a closed area instead of the entire surface.
- Generate Cut/Fill Report - this creates an xml report opened in the default Web Browser.
- Insert Cut/Fill Summary - This creates an AutoCAD entity in the drawing instead of an external report.

“Analyze” tab > Grading Volume Tools

Raise and lower the grading features.

Balance Volumes

	Cut	Fill	Net	Description
1	21945.24 Cu. Yd.	6.76 Cu. Yd.	Cut: 21938.49 Cu. Yd.	Group lowered 3.000'
2	349.00 Cu. Yd.	12177.13 Cu. Yd.	Fill: 11828.12 Cu. Yd.	Group lowered 4.000'
3	0.00 Cu. Yd.	58676.45 Cu. Yd.	Fill: 58676.45 Cu. Yd.	

Group: Grading Group 1

© 2025 CAD Masters, Inc. All rights reserved.

